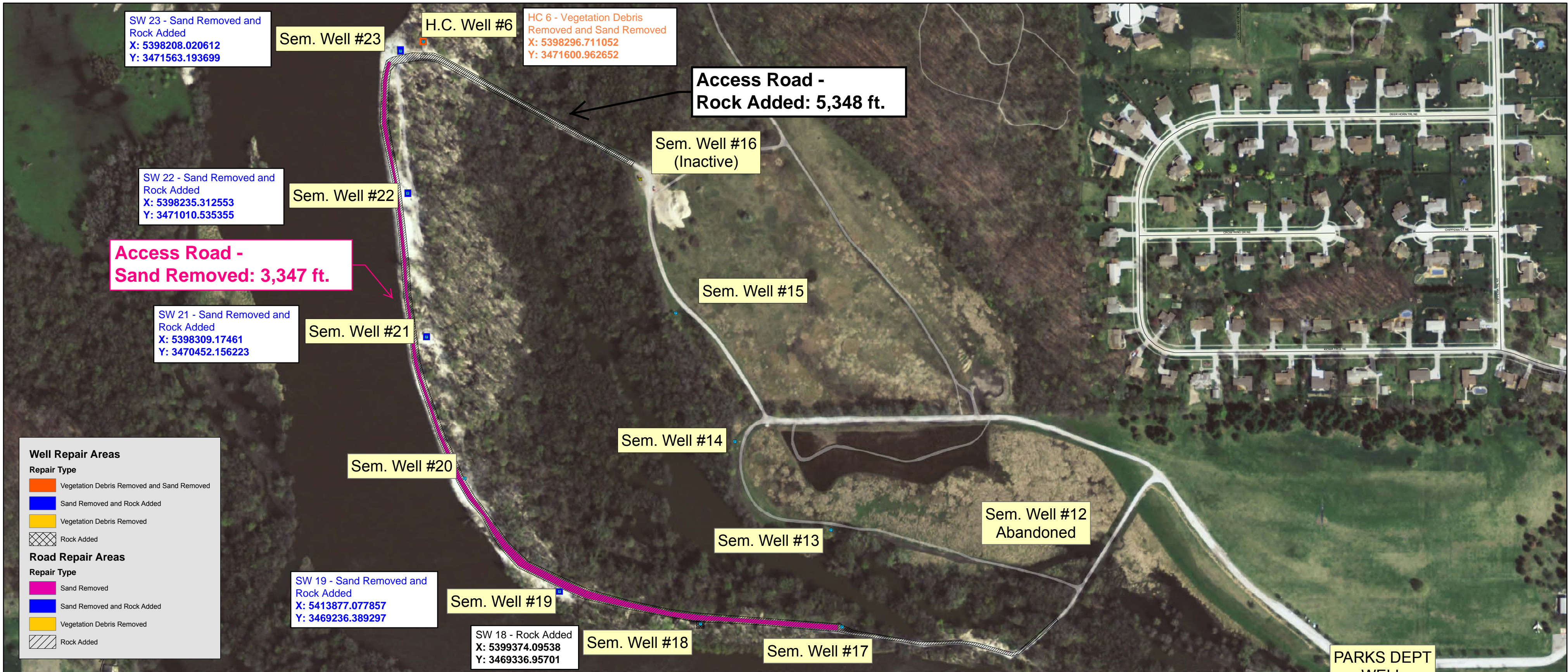




Upper West



SW 23 - Sand Removed and Rock Added
 X: 5398208.020612
 Y: 3471563.193699

Sem. Well #23

H.C. Well #6

HC 6 - Vegetation Debris Removed and Sand Removed
 X: 5398296.711052
 Y: 3471600.962652

Access Road - Rock Added: 5,348 ft.

Sem. Well #16 (Inactive)

SW 22 - Sand Removed and Rock Added
 X: 5398235.312553
 Y: 3471010.535355

Sem. Well #22

Access Road - Sand Removed: 3,347 ft.

Sem. Well #15

SW 21 - Sand Removed and Rock Added
 X: 5398309.17461
 Y: 3470452.156223

Sem. Well #21

Sem. Well #14

Sem. Well #20

Sem. Well #12 Abandoned

Sem. Well #13

SW 19 - Sand Removed and Rock Added
 X: 5413877.077857
 Y: 3469236.389297

Sem. Well #19

SW 18 - Rock Added
 X: 5399374.09538
 Y: 3469336.95701

Sem. Well #18

Sem. Well #17

PARKS DEPT WELL

Well Repair Areas

Repair Type

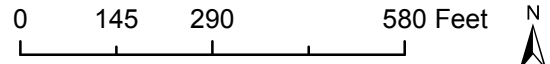
- Vegetation Debris Removed and Sand Removed
- Sand Removed and Rock Added
- Vegetation Debris Removed
- Rock Added

Road Repair Areas

Repair Type

- Sand Removed
- Sand Removed and Rock Added
- Vegetation Debris Removed
- Rock Added

Upper Seminole



The Utilities Department – Water Division [the UTILITY] of the City of Cedar Rapids [the CITY] offers the attached or accompanying information under the following terms: The information is for the use and convenience of the intended recipient and related to the specified project only; it is not to be distributed or copied without express permission of the CITY or UTILITY. The nature of the information is that it is constantly subject to change. Water Service Shut-Off valve locations are not being mapped; the recipient is responsible to verify the completeness and integrity of the information together with its suitability for use or compliance with any codes or ordinance requirements. This information is provided with NO GUARANTEE as to the accuracy, completeness, location, scale, size or capacity of the improvements and/or related information. Neither the CITY nor the UTILITY accepts any liability arising from the use or interpretation of the information provided.